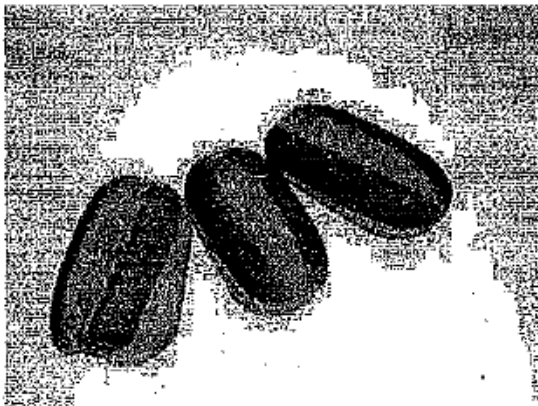


## Product Information

Home » Klosterman Products » Whole Grain Rich » 5" Whole Grain Rich Hoagie Bun

### 5" Whole Grain Rich Hoagie Bun





66641

**KEEP FROZEN**

INGREDIENTS: BONELESS SKINLESS CHICKEN BREAST WITH RIB MEAT, WATER, SALT, RICE STARCH, SODIUM PHOSPHATES, CHICKEN BROTH, NATURAL FLAVOR, COATED WITH: WATER, CARAMEL COLOR.

FULLY COOKED

**BONELESS SKINLESS  
CHICKEN BREASTS  
WITH RIB MEAT  
COLORED WITH CARAMEL**

PRODUCT OF USA  
NON220154W106CS

DISTRIBUTED BY  
HORMEL FOOD SALES, LLC  
1 HORMEL PLACE  
AUSTIN, MN 55912  
©HORMEL FOODS, LLC

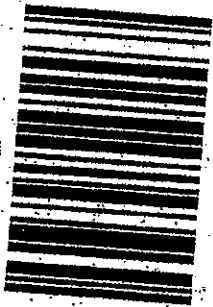


QUESTIONS OR COMMENTS  
PLEASE CALL 1-800-723-8000  
[www.hormelfoodservice.com](http://www.hormelfoodservice.com)

**NET WT.: 40 LBS (18 kg)**

*Grilled Chicken  
Chicken Parm*

D-0212-BH



**FINE  
GROUND BEEF**

73/27

1453

0

*Meatsauce  
Taco  
Sloppy Joe*

ONE TORN...  
FOR 30 sec. TO 45 sec.

# Nutrition Facts /

## Datos de Nutrición

Serv. Size / Tamaño por porciones  
1 Tortilla (28g)

Servings per container /  
Porciones por Envase 16

Calories / Calorías 80

Calories from Fat / Calorías de Grasa 20

Amount Per Serving /  
Cantidad por Porción

	% Daily Value* / % Valor Diario	Amount / Cantidad
--	------------------------------------	----------------------

**Total Fat / Grasa Total** 2.5g 4%

**Saturated Fat / Grasa Saturada** 1g 5%

**Trans Fat / Grasa Trans** 0g 0%

**Cholesterol / Colest.** 0mg 0%

**Sodium / Sodio** 10mg 2%

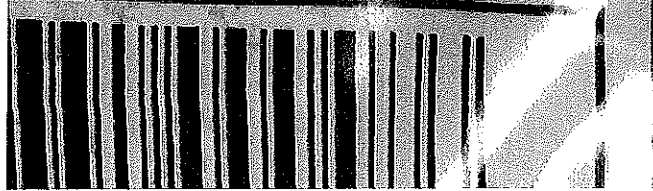
**Vitamin / Vitamina** 10% • **Vitamin / Vitamina** 10%

### INGREDIENTS: 100% Whole wheat flour, Water, Vegetable shortening

(Contains one or more of the following: Palm oil and/or Corn oil),  
Contains 2% or less of the following: Ground flax seeds, Salt, Aluminum  
free leavening (Sodium acid pyrophosphate, Sodium bicarbonate, Calcium  
sulfate, Monocalcium phosphate), Wheat protein, Preservatives (Calcium  
propionate, Sorbic acid), Dough conditioner (Lecithin, Fumaric acid, Gum  
Arabic, Potassium glycerides, Sodium metabisulfite),  
Allergens: Wheat and Soy

### INGREDIENTES: 100% Harina de trigo integral, Agua, Grasa vegetal

(Contiene uno o más de los siguientes: Aceite de palma y/o Aceite de maíz),  
Contiene 2% o menos de lo siguiente: Semilla de linaza molienda, Sal, Levadura  
sin aluminio, Conservantes: Ácido succínico, Bicarbonato de sodio, Almidón de  
cañadilla, Ácido ascórbico, Ácido fólico, Ácido ascórbico, Almidón de







**Parboiled Long Grain Rice, 25 Lb Box,  
1/Case (722987)**

Group H  
1/31/17



**General Nutrition**

**Nutrition Facts Shown**

AP Rice, Parboiled, 1/4cDry=1cPrpd

**Nutrition Facts**

Serving Size 0.25 cup (47g)

Amount Per Serving

Calories 170

% Daily Value\*

Fat 0g

n/a

Saturated Fat 0g

n/a

Trans Fat 0g

Polyunsat Fat

n/a

Monounsatur Fat

n/a

Cholesterol 0mg

n/a

Sodium 0mg

n/a

Potassium

n/a

Carbohydrates 37g

12%

Fiber 0g

n/a

Sugar 0g

Protein 4g

8%

Vitamin A 0% Vitamin C 0% Calcium 0% Iron 9%

\*Based on a 2000 calorie diet

Calories Per Gram

Fat 0g Carbohydrates 4 Protein 4

Rice  
Rice Pilaf

**Ingredients**

Long grain parboiled rice, enriched with iron (ferrous phosphate), niacin (niacin mononitrate), and folic acid. **COMMON ALLERGENS PRESENT:**

None.



Spaghetti

WHOLE LOT BETTER PASTA  
SPAGHETTI NUTRITIONAL FACTS

Group H  
4/31/17

**Nutrition Facts**

Serving Size (56g)  
Servings Per Container

Amount Per Serving

**Calories 210**      **Calories from Fat 10**

**% Daily Value\***

**Total Fat 1.5g**      **2%**

**Saturated Fat 0g**      **0%**

**Trans Fat 0g**

**Cholesterol 0mg**      **0%**

**Sodium 0mg**      **0%**

**Total Carbohydrate 41g**      **14%**

**Dietary Fiber 4g**      **16%**

**Sugars 2g**

**Protein 7g**

**Vitamin A 0%**      • **Vitamin C 0%**

**Calcium 2%**      • **Iron 10%**

**Thiamin 25%**      • **Riboflavin 10%**

**Niacin 15%**      • **Folate 20%**

**Phosphorus 10%**      • **Magnesium 15%**

\*Percent Daily Values are based on a 2,000-calorie diet. Your daily values may be higher or lower depending on your calorie needs:

	Calories:	2,000	2,500
Total Fat	Less than	65g	80g
Saturated Fat	Less than	20g	25g
Cholesterol	Less than	300mg	300mg
Sodium	Less than	2,400mg	2,400mg
Total Carbohydrate		300g	375g
Dietary Fiber		25g	30g

Calories per gram:  
Fat 9 • Carbohydrate 4 • Protein 4

**INGREDIENTS**

Whole wheat durum flour,  
Durum Wheat Semolina, Durum  
wheat flour, niacin, iron (ferrous  
sulfate), thiamin mononitrate,  
riboflavin, and folic acid.





Group H

4/31/17

Whole Lot Better

# WHOLE LOT BETTER PASTA

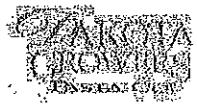
Egg Noodles

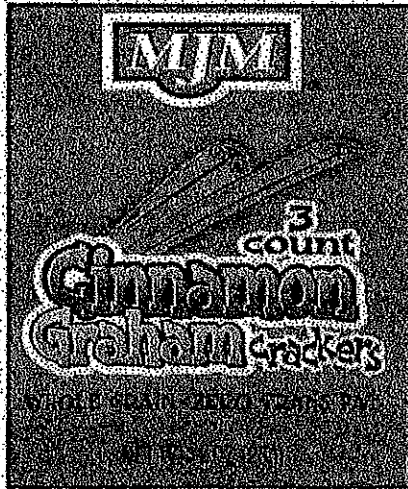
Enriched Whole Grain Pasta

Nutrition Facts	
Serving Size (86g)	
Servings Per Container	
Amount Per Serving	
Calories 210	Calories from Fat 20
% Daily Value*	
Total Fat 2.5g	4%
Saturated Fat 0g	0%
Trans Fat 0g	
Polyunsaturated Fat 0g	
Monounsaturated Fat 0g	
Cholesterol 55mg	18%
Sodium 15mg	1%
Total Carbohydrate 39g	13%
Dietary Fiber 4g	16%
Sugars 2g	
Protein 8g	
Vitamin A 0%	Vitamin C 0%
Calcium 2%	Iron 10%
Thiamin 25%	Riboflavin 10%
Niacin 15%	Folate 20%
Phosphorus 15%	Magnesium 15%
*Percent Daily Values are based on a diet of other people's secrets.	
Dietary Guidelines for Americans	
Calories 2,000 2,500	
Total Fat	Less than 65g 80g
Saturated Fat	Less than 20g 25g
Cholesterol	Less than 300mg 300mg
Sodium	Less than 2,400mg 2,400mg
Total Carbohydrate	300g 375g
Dietary Fiber	25g 30g
Calories per gram	
Fat 9   Carbohydrate 4   Protein 4	

Whole wheat durum flour, Durum Wheat Semolina, Durum Wheat flour, niacin, iron (ferrous sulfate), thiamin mononitrate, riboflavin, and folic acid, eggs

FD 4/1 (PM)





# MJM Super Wholesome Cinnamon Graham Nutritional Statement MJM # 308151

Meets Criteria for the Alliance for a Healthier Generation:

NUTRITION DATA*	Per 100g	Per Serving 28g/1oz	% DV*
Calories	400	110 kcal	
Calories From Fat	102	30 kcal	
Total Fat	11	3 g	5%
Saturated Fat	3	1 g	4%
Trans Fat	0	0 g	
Polyunsaturated Fat	4	1 g	
Monounsaturated Fat	2	1 g	
Cholesterol	0	0 mg	0%
Sodium	526	150 mg	6%
Potassium	167	47 mg	
Total Carbohydrate	70	20 g	7%
Dietary Fiber	5	1 g	6%
Sugars	25	7 g	
Protein	8	1 g	
Vitamin A	999	280 IU	6%
Vitamin C	12	3 mg	6%
Calcium	27	8 mg	0%
Iron	7	2 mg	10%
Vitamin B1 Thiamin	1	0 mg	15%
Vitamin B2 Riboflavin	1	0 mg	10%
Vitamin B3 Niacin	9	2 mg	10%

\*% Daily Values based on 2,000 calorie diet.

Contains: Wheat

**HUSCC GOLD STANDARD APPROVED**

ALL MJM Products Are Whole Grain & Meet New USDA Guidelines

- ◆ Whole Grain
- ◆ Zero Trans Fat
- ◆ All Natural Flavors
- ◆ Low Fat
- ◆ Low Sat Fat
- ◆ Low Sodium
- ◆ No Peanuts or Tree Nuts
- ◆ No Dairy
- ◆ No Preservatives
- ◆ Kosher
- ◆ SB12 Compliant
- ◆ 10% Iron
- ◆ Equals One Grain



Whole Grain (g)	9.31
	54%
Total Grain (g)	17.32

Grain component derived from wheat.

**INGREDIENTS:**

Whole wheat flour, enriched flour (wheat flour, niacin, reduced iron, thiamin mononitrate, riboflavin, folic acid), sugar, partially hydrogenated soybean and cottonseed oil, high fructose corn syrup, honey, cinnamon, salt, sodium bicarbonate, molasses, added vitamins and iron (ascorbic acid, vitamin A palmitate, niacinamide, iron/electrolytic, riboflavin, thiamin mononitrate, maltodextrin as carrier).

UPC Code	Serving Size	Case/Pk	TI-HI	Case Dimension	Case Cube	Gross Wt	Net Wt
06828303081502	28 g/1 oz.	150/3ct	8 x 1.4 HI	5x19x11	0.59	11 lbs	9.38 lb

Each 1 oz package of this product satisfies USDA requirements for ONE GRAIN serving, as well as the FCS instruction for the Grains/Breads component requirement in the National School Lunch and School Breakfast Program.

MJM does not purchase, store or produce any products that contain peanuts, peanut oil, peanut butter, or any products made from nuts.

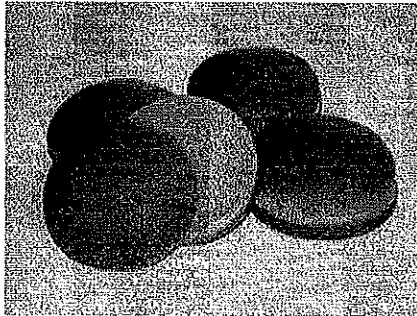
*Helen Corey*  
Helen Corey  
Vice President  
MJM Marketing

In compliance with USDA standards, all MJM products contain at least 51% whole grains, with the whole grain per serving greater than 8 grams. MJM products are nut-free, low in saturated fat, zero trans fat and zero cholesterol.

# Product Information

Home » Klosterman Products » Whole Grain Rich » 4" Whole Grain Rich Hamburger Bun

## 4" Whole Grain Rich Hamburger Bun



### Product Dimensions

Height: 1.75in / 44.5mm  
Diameter: 4in / 101.6mm  
Heel Slice: 0.63in / 15.9mm  
Weight: 2oz / 56g

### Additional Specifications

Bread Type: Whole Grain Rich  
Color: Golden Brown  
Top Profile: Smooth  
Toppings: None  
Alternate Versions: None

### Distribution

Servings per Container: 12  
Frozen Case Count: 120  
Fresh: Yes  
Frozen: Yes

### Suggested Uses

Hamburger, BBQ Sandwich, Deli Sandwich

### Allergens

CONTAINS: Wheat, Soy

### Key Attributes

Zero Trans Fat, Zero Cholesterol

### Nutrition Information

Nutrition Facts	
Serving Size 1 Bun (101g)	
Amount Per Serving	
Total Fat	12g
Sodium	150mg
Total Carbohydrate	25g
Dietary Fiber	2g
Sugars	5g
Protein	4g
*Percent Daily Values are based on a diet of other people's secrets.	

Click to enlarge

# HICKORY SMOKED TURKEY SALAMI, CN LABEL, FROZEN

PRODUCT CODE: 96831



Unit Weight/Count: 5.5 LB / 2	Case Cube: .32 CF
Product UPC:	Pallet Configuration: 12 x 12
Case GTIN: 90075278968317	Cases/Pallet: 144
Average Case Weight: 10.27 LB	Case Tare: .73 LB
Case Dimensions (LxWxH) O.D: 12.375 IN x 9.75 IN x 4.625 IN	EDI UPC: 027527896831

## FEATURES & BENEFITS

- COTTO STYLE SALAMI
- CN LABELED FOR SCHOOLS
- FULLY COOKED
- 0 GRAMS TRANS FAT PER SERVING
- GLUTEN FREE

## INGREDIENTS

TURKEY, TURKEY HEARTS, WATER, SALT, CONTAINS LESS THAN 2% OF DEXTROSE, SPICES, POTASSIUM LACTATE, POTASSIUM ACETATE, SUGAR, SODIUM DIACETATE, SODIUM ERYTHORBATE, FLAVORINGS, SODIUM NITRITE.

## PREPARATION

HANDLING INSTRUCTIONS:  
FROZEN PRODUCT: STORE 0°F OR COLDER

THAWING INSTRUCTIONS:  
THAW UNOPENED PACKAGED PRODUCT UNDER REFRIGERATION FOR 48 HOURS (TIME VARIES WITH WEIGHT).

## CN INFORMATION

CN LABELED - CN NUMBER 090482 - CN DATE 06-14  
A 2.0 OZ. PORTION OF TURKEY SALAMI PROVIDES 1.25 OZ. EQUIVALENT MEAT FOR CHILD NUTRITION MEAL PATTERN REQUIREMENTS.

## SHELF LIFE

TOTAL MANUFACTURER'S FROZEN SHELF LIFE IS 365 DAYS FROM DATE OF PACK

## Nutrition Facts

Serving Size 2 oz. (56g)  
Servings Per Container Varied

Amount Per Serving	
Calories 80	Calories from Fat 35
<hr/>	
	% Daily Value*
Total Fat 4 g	6%
Saturated Fat 1 g	5%
Trans Fat 0 g	
Cholesterol 40 mg	13%
Sodium 460 mg	19%
Total Carbohydrate 1 g	0%
Dietary Fiber 0 g	0%
Sugars 0 g	
Protein 10 g	
<hr/>	
Vitamin A 0 %	Vitamin C 0 %
Calcium 0 %	Iron 6 %
*Percent Daily Values are based on a 2,000 calorie diet. Your daily values may be higher or lower depending on your calorie needs.	
	Calories: 2,000 2,500
Total Fat	Less than 65g 80g
Sat Fat	Less than 20g 25g
Cholesterol	Less than 300mg 300mg
Sodium	Less than 2,400mg 2,400mg
Total Carbohydrate	300g 375g
Dietary Fiber	25g 30g
Calories per gram: Fat 9 • Carbohydrate 4 • Protein 4	



**LOWER FAT TURKEY CORN DOG**

BATTER WRAPPED TURKEY FRANKFURTER ON A STICK  
 FAT CONTENT HAS BEEN REDUCED BY 65% WHEN COMPARED TO OUR REGULAR  
 TURKEY CORN DOG. FAT CONTENT HAS BEEN REDUCED FROM 14g TO 6g PER SERVING.  
 BATTER INGREDIENTS: WATER, ENRICHED FLOUR (WHEAT FLOUR, MALTED BARLEY FLOUR, NIACIN, IRON, THIAMINE MONONITRATE,  
 RIBOFLAVIN, FOLIC ACID), SUGAR, YELLOW CORN FLOUR, ENRICHED DEGERMINED YELLOW CORN MEAL, YELLOW CORN MEAL, NIACIN,  
 IRON, THIAMINE MONONITRATE, RIBOFLAVIN, FOLIC ACID, SOY FLOUR, CONTAINS LESS THAN 2% OF LEAVENING (SODIUM ACID  
 PYROPHOSPHATE, SODIUM BICARBONATE), SOYBEAN OIL, SALT, EGG YOLK, POTATO FLOUR, EGG WHITE, DRIED MILK, ARTIFICIAL  
 FLAVOR, FRIED IN VEGETABLE OIL. INGREDIENTS: TURKEY, WATER, VEGETABLE PROTEIN PRODUCT, ISOLATED SOY PROTEIN,  
 MAGNESIUM OXIDE, ZINC OXIDE, NIACINAMIDE, FERROUS SULFATE, VITAMIN B-12, COPPER GLUCONATE, VITAMIN A PALMITATE,  
 CALCIUM PANTOTHENATE, PYRIDOXINE HYDROCHLORIDE, THIAMINE MONONITRATE, RIBOFLAVIN, CONTAINS 2% OR LESS OF  
 DEXTROSE, SALT, CORN SYRUP SOLIDS, SPICES, POTASSIUM LACTATE, SODIUM LACTATE, SODIUM PHOSPHATE, FLAVORINGS, SODIUM  
 DIACETATE, SODIUM ERYTHROBATE, SODIUM NITRITE.  
 CONTAINS: WHEAT, SOY, EGG AND GLUTEN.

KEEP FROZEN

**95106**

NET WT. 18 LBS.  
 FOSTER FARMS  
 LIVINGSTON, CA 95384  
 FOR FOODSERVICE USE ONLY



074637  
 EACH 4 OZ. FOSTER FARMS LOWER FAT TURKEY CORN DOG  
 PROVIDES 2 OZ. EQUIVALENT MEAT/MEAT ALTERNATE AND 2  
 SERVINGS OF BREAD ALTERNATE FOR CHILD NUTRITION MEAL  
 PATTERN REQUIREMENTS. (USE OF THIS LOGO AND STATEMENT  
 AUTHORIZED BY THE FOOD AND NUTRITION SERVICE, USDA 04-03).  
 CN CN

**Nutrition Facts**

Serving Size: 1 Corn Dog (112g)  
 Servings Per Container: 72

Amount Per Serving	
Calories 210	Calories from Fat 69
% Daily Value*	
Total Fat 6g	10%
Saturated Fat 1.5g	8%
Trans Fat 0g	
Cholesterol 15mg	5%
Sodium 740mg	31%
Total Carbohydrate 27g	9%
Dietary Fiber 1g	4%
Sugars 0g	
Protein 12g	
Calcium 4%	Iron 15%

\*Percent Daily Values are based on a diet of other people's secrets.

American Pride Seafood 53258



**3.6 oz OVEN READY WHOLE GRAIN  
BREADED ALASKA POLLOCK RECTANGLES**

**KEEP FROZEN**

**53258**

**Nutrition Facts**  
Serving Size 1 Piece (102g)  
Servings Per Container About 20

Amount Per Serving		% Daily Value*
<b>Calories 250</b>	Calories from Fat 80	
<b>Total Fat 9g</b>	18%	
<b>Saturated Fat 1g</b>	2%	
<b>Trans Fat 0g</b>		
<b>Cholesterol 45mg</b>	9%	
<b>Sodium 300mg</b>	13%	
<b>Total Carbohydrate 20g</b>	7%	
<b>Dietary Fiber 2g</b>	8%	
<b>Sugars 0g</b>		
<b>Protein 13g</b>		
<b>Vitamin A 0%</b>	<b>Vitamin C 0%</b>	
<b>Calcium 0%</b>	<b>Iron 0%</b>	

\*Percent Daily Values are based on a diet of other people's secrets.

**INGREDIENTS:** ALASKA POLLOCK 71.3%, BREADING & BATTER 28.7%, WATER, WHOLE WHEAT FLOUR, ENRICHED WHEAT FLOUR (FLOUR, NIACIN, IRON, THIAMINE MONONITRATE, RIBOFLAVIN, FOLIC ACID), TAPIOCA DEXTRIN, YEAST, SALT, SUGAR, CORN POWDER, YEAST EXTRACT, GARLIC POWDER, DEHYDRATED GARLIC, NATURAL FLAVORS, DEHYDRATED ONION, MODIFIED CORN STARCH, LEAVENING (DICALCIUM PHOSPHATE, SODIUM BICARBONATE), PARFUMED IN CANOLA OIL AND/OR SOYBEAN OIL. CONTAINS POLLOCK, WHEAT.

**CONTAINS 96 WHOLE GRAIN PER 3.6 OZ SERVING.**

**COOKING INSTRUCTIONS:** COOK FROM A FROZEN STATE. COOK TO AN INTERNAL TEMPERATURE OF 160°F. CONVENTIONAL OVEN; BAKE AT 400°F FOR APPROXIMATELY 20 MINUTES. CONVECTION OVEN/BAZE AT 375°F FOR APPROXIMATELY 14 MINUTES.

08688

One 3.6 oz. Oven Ready Whole Grain Breaded Pollock Rectangle  
provides 2.0g. equivalent whole grain and 1.0g. equivalent protein.  
Check Nutrition and Protein Requirements (Use of this logo constitutes  
a claim authorized by the Food and Nutrition Service, USDA/USDA/FSIS)

**NET WEIGHT 20 LBS. (9.08kg)**

**USDA**  
Approved  
100%  
Purified  
Ingredients

Manufactured by: High Liner Foods, Portsmouth, NH 03801  
For inquiries call: 1-833-680-3654  
www.highlinerfoods.com

1 00 70737 63258 4

*Kathy Gilmore* Date: 11/14/2013

Kathy Gilmore, Quality Engineer  
High Liner Foods



# Brakebush®

*Now that's great-tasting chicken*

186-16156



**5622** NET WT 12 LBS  
8905-01-E59-2308



PROCESSED BY  
BRAKEBUSH BROS., INC  
WESTFIELD, WI 53984  
KEEP FROZEN

## CN Fully Cooked Breaded Nugget Shaped Chicken Breast Patties

WITH FIB MEAT

INGREDIENTS: CHICKEN BREAST WITH FIB MEAT, WATER, ISOLATED SOY PROTEIN, SALT, SODIUM PHOSPHATES, SEASONING (SALT, GARLIC POWDER, SPICE, SOYBEAN OIL, BLEACHED WHEAT FLOUR (W/IRON, REDUCED IRON, THIAMINE MONONITRATE, BIOTIN, FOLIC ACID), WATER, YELLOW CORN FLOUR, FOOD STARCH-MODIFIED, SPICES, DRIED ONION, DODDED SALT, DEXTROSE, LEAVENING (SODIUM ACID PYROPHOSPHATE, SODIUM BICARBONATE, WHEY, PAPRIKA EXTRACT (COLOR), SOY FLOUR, SODIUM ALGINATE, NONFAT MILK, ARTIFICIAL FLAVOR, EGG.

CN 1092268

CN FIVE 0.65 OZ. FULLY COOKED BREADED NUGGET SHAPED CHICKEN BREAST PATTIES WITH FIB MEAT PROVIDE 2.00 OZ. EQUIVALENT MEASUREMENT ALTERNATE FOR THE CHILD NUTRITION MEAL PATTERN REQUIREMENTS. (USE OF THIS LOGO AND STATEMENT AUTHORIZED BY THE FOOD AND NUTRITION SERVICE, USDA 02-15.)

CN

DISCLAIMER: This product contains grains that are not creditable in school meal programs. Additional grains must be served to meet meal pattern requirements

PREPARATION: COOK TO A MINIMUM OF 165° F. BAKE IN SINGLE LAYER IN PREHEATED CONVECTION OVEN AT 350°F. FOR 8-10 MIN. DEEP FRY FROZEN NUGGETS AT 350° F. FOR 2-4 MIN. BAKE IN SINGLE LAYER IN PREHEATED CONVENTIONAL OVEN AT 400°F FOR 12-15 MIN. MICROWAVE ON HIGH ABOUT 1-2 MIN. PER SERVING. TURNING ONCE. ADJUST TIMES TO QUANTITY-BEING COOKED AND EQUIPMENT USED. DO NOT OVERCOOK

Contains: Egg, Milk, Soy, Wheat.

Not For Retail Sale

81015

Brothers Inc.



tenderbroil  
PATTIES



90 PORTIONS

**CN FULLY COOKED  
FLAMEBROILED BEEF PATTIES**  
CAMEL COLOR ADDED

22193-330

CN 085279  
ONE 3.00 OZ. FULLY COOKED FLAMEBROILED BEEF PATTIE PROVIDES 2.50 OZ.  
EQUIVALENT MEAT/MEAT ALTERNATE FOR CHILD NUTRITION MEAL PATTERN CN  
REQUIREMENTS. (USE OF THIS LOGO AND STATEMENT AUTHORIZED BY THE FOOD  
AND NUTRITION SERVICE, USDA 09-12.)

CN  
INGREDIENTS: GROUND BEEF (NOT MORE THAN 30% FAT), WATER, TEXTURED  
VEGETABLE PROTEIN PRODUCT (SOY PROTEIN CONCENTRATE, CAMEL COLOR, ZINC  
OXIDE, NIACINAMIDE, FERROUS SULFATE, COPPER GLUCONATE, VITAMIN A PALMITATE,  
CALCIUM PANTOTHENATE, THIAMINE MONONITRATE (B1), PYRIDOXINE HYDROCHLORIDE  
(B6), RIBOFLAVIN (B2), CYANOCOBALAMIN (B12)), SALT, SODIUM PHOSPHATE, CAMEL  
COLOR.

CONTAINS: SOY

Comments or questions about AdvancePierre products?  
Call toll free 800-317-2333 www.AdvancePierre.com

LK22193-330 020216

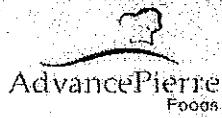


00080939221936

**KEEP FROZEN**

AdvancePierre Foods, Inc. 9990 Princeton Glendale Rd. Cincinnati, OH 45246

MEAT/MS VIB



# Our Deluxe Beef Meatballs

# CN 1-17-505-0

INGREDIENTS: Ground Beef (Not More Than 20% Fat), Water, vegetable Protein Product (Soy Protein Concentrate, Zinc Oxide, Nicotinamide, Ferrous Sulfate, Copper Gluconate, Vitamin A Palmitate, Calcium Pantothenate, Thiamine Mononitrate (B1), Pyridoxine Hydrochloride (B6), Riboflavin (B2), Cyanocobalamin (B12), (May Contain Caramel Color), (May Contain Soy Lecithin)), Meatball Seasoning (Dextrose, Tomato Powder, Soybean Oil, Disodium Inosinate and Disodium Guanylate, Spice Extractives, Nonfat Milk), Bell Peppers, Dehydrated Minced Onion, Bread Crumbs (Bleached Wheat Flour, Soybean Oil, Dextrose, Leavening (Sodium Acid Pyrophosphate, Sodium Bicarbonate), Whey, Oleoresin Paprika), Salt, Sodium Phosphate Set in Vegetable Oil

CONTAINS: Milk, Soy, Wheat

Heat product to an internal temperature of 165°F as measured with the use of a meat thermometer. If detailed preparation instructions are needed, please visit our website: [www.advancepierre.com](http://www.advancepierre.com).

CN 090923  
 Five 0.50-oz Fully Cooked Beef Meatballs Provide 2.00-oz Equivalent Meat/Meat Alternate For Child Nutrition Meal Pattern Requirements (Use Of This Logo And Statement Authorized By The Food And Nutrition Service USDA D6-14.) CN

**Fully Cooked  
 Keep Frozen**

**Net Wt. 30 Lbs.**

CONTAINS COMMODITIES DONATED BY THE UNITED STATES DEPARTMENT OF AGRICULTURE  
 THIS PRODUCT SHALL BE SOLD ONLY TO ELIGIBLE RECIPIENT AGENCIES  
 Comments or questions about AdvancePierre products? Call toll free 800-317-2333 [www.AdvancePierre.com](http://www.AdvancePierre.com)

RTE 1-17-505-0 090214




00889760017650

*Distributed by  
 AdvancePierre Foods  
 Cincinnati, OH 45246*

# Product Information





**FOR FOOD SERVICE USE**

NET WEIGHT 12 LB


100 79500 105395 8

KEEP REFRIGERATED

**05395**  
8/1

**JUMBO BEEF FRANKS**

NET WEIGHT 12 LB



**Nutrition Facts**

<b>Per 100g (3.5oz)</b>	
Total Fat	15g
Sodium	100mg
Total Protein	10g
<b>% Daily Value*</b>	
Total Fat	30%
Sodium	20%
Total Protein	20%

1 Frank = 2oz MMA

CN #	Product Description	Serving Size	CN Crediting	Expiration	Est #	Company
084111	WHOLE GRAIN MAPLE FLAVORED PANCAKE WRAP	One 2.85 oz. Serving	1.00 oz. Equivalent Meat/Meat Alternate and 1.00 oz. Equivalent Grains	10/01/17	P6137B	FOSTER FARMS - DELI
084112	WHOLE GRAIN MAPLE FLAVORED MINI TURKEY PANCAKE WRAPS	Three 0.85 oz. Serving	1.00 oz. Equivalent Meat/Meat Alternate and 1.00 oz. Equivalent Grains	09/17/17	P20923	FOSTER FARMS
084115	0.334 OZ MINI FRANKFURTER MADE WITH CHICKEN AND PORK	Three 0.33 oz. Frankfurters	1.00 oz. Equivalent Meat	07/02/17	P2512	MONOGRAM FROZEN FOODS
084116	1 OZ FRANKFURTER MADE WITH CHICKEN AND PORK	One 1.00 oz. Frankfurter	1.00 oz. Equivalent Meat	07/02/17	P2512	MONOGRAM FROZEN FOODS
084117	1.6 OZ FRANKFURTER MADE WITH CHICKEN AND PORK	One 1.60 oz. Frankfurter	1.50 oz. Equivalent Meat	07/02/17	P2512	MONOGRAM FROZEN FOODS
084118	2 OZ FRANKFURTER MADE WITH CHICKEN AND PORK	One 2.00 oz. Frankfurter	2.00 oz. Equivalent Meat	07/02/17	P2512	MONOGRAM FROZEN FOODS
084119	TURKEY BACON SLABS	One 1.00 lb. Serving	9.98 oz. Equivalent Meat	06/25/17	P19349	SUGAR CREEK PACKING COMPANY
084120	WHOLE WHEAT CHEESE AND PEPPERONI BREADSTICKS	One 3.06 oz. Breadsticks	1.00 oz. Equivalent Meat/Meat Alternate and 2.00 oz. Equivalent Grains	09/17/17	5137A	NARDONE BROTHERS BAKING CO., INC
084122	WHEAT PENNE BAKE WITH BEEF AND CHICKEN PATTY CRUMBLE SAUCE	One 8.42 oz. Serving	2.00 oz. Equivalent Meat/Meat Alternate, 0.75 oz. Equivalent Grains, and 7/8 Cup Red/Orange Vegetable	07/23/17	1000	PREFERRED MEAL SYSTEMS, INC
084123	SPAGHETTI WITH BEEF AND CHICKEN PATTY CRUMBLE SAUCE	One 8.28 oz. Serving	2.00 oz. Equivalent Meat/Meat Alternate, 0.75 oz. Equivalent Grains, and 7/8 Cup Red/Orange Vegetable	07/23/17	1000	PREFERRED MEAL SYSTEMS, INC

\* This product does not meet the grain requirement for school meals.

\*\* This product may only contribute to the additional vegetable subgroup for school meals.